

SRM-0655

3RU Frame with Controller and Redundant Power Supplies

2024 Datasheet



The SRM-0655 frame is a 3RU frame that has been specifically designed to accommodate Samim modular products. This frame can house between 8 to 15 modules, depending on the type of rear panels utilized, while providing the required power (from redundant AC/DC bricks), cooling, and control and monitoring functions for all installed modules.

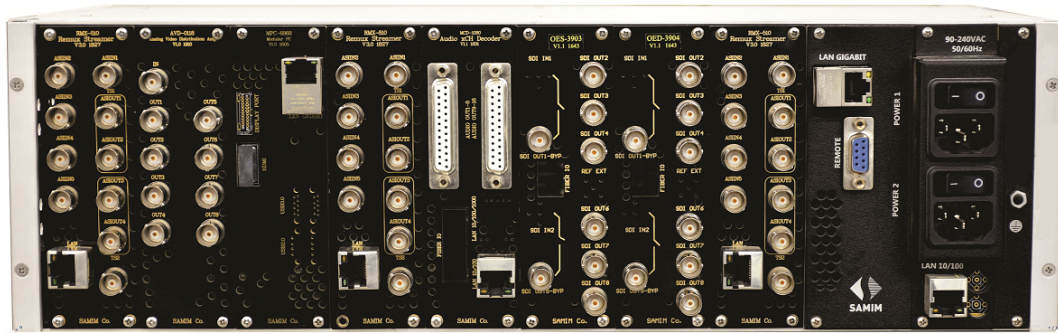
Leveraging its internal buses and web-based UI, the SRM-0655 frame allows users to monitor, control, and upgrade installed modules, view and export system logs, perform access control, check alarms, and monitor the proper function of power supplies and the fan module.

The frame structure has been designed to allow operators to easily and quickly install or change modules, power bricks, and service the cooling fans. In instances where additional cooling is required, an additional 1RU fan unit is available to order. The frame can be controlled and monitored through SNMP and web interface, in addition to the front panel keypad and display.

Key Features

- Modular design, making it adaptable to varying needs
- Accommodates up to 15 modules
- High reliability with two redundant power supplies
- Hot pluggable modules and power supplies for easy replacement
- Intuitive web-based user interface with built-in server
- Front panel display with keypad for local monitoring and control
- Remote firmware upgrade
- SNMP and REST-API support
- Constant monitoring of power supplies and fans key parameters
- Store and export logs of modules and frame for troubleshooting and analysis
- Automatic or manual fan control
- Access control for authorized system access

Rear View



Specifications

Operational		Mechanical	
Capacity	Up to 15 modules with single-slot back panels, up to 8 modules with dual-slot back panels	Dimensions	48.2x13.2x28.3 cm (3RU, 19-inch rack)
Power Supplies	AC-to-DC, 1+1 Redundant	Dimensions with EFU	48.2x17.5x28.3 cm (4RU)
Number of Fans	6 (front-to-back airflow)	Weight	7.6 kg (with x2 power bricks)
Network	1x LAN 10/100/1000, RJ45	Environmental	
Electrical		Temperature	5 °C to 40 °C
Voltage	100-240 VAC, 50-60Hz	Humidity	0% to 90% (non-condensing)
Power	<225W (Depending on the installed modules & fan speed)	Electromagnetic Compliance	CISPR 32:2015, CISPR 35:2016, IEC 61000-4
		Safety	IEC 60950-1

Ordering Information

Order Code	Description	Type
SRM-0655-T-FL	3RU Frame with Controller Module	Base
PSM-6522	AC/DC 225W Power Supply for 3RU SRM frame	Base/Optional
EFU-6518	External Fan Unit (1RU) for 3RU SRM frame	Optional

With over two decades of extensive experience in the broadcast and media industry, Samim Group has emerged as a rapidly growing manufacturer and developer of professional-grade hardware and software solutions that cater to Broadcast Production Infrastructure, Intercom Systems, and Media Business Automation. We remain attuned to the latest technological advancements, ensuring we deliver high-standard solutions and products that can be marketed globally.

©Samim Group. All rights reserved. Specifications are subject to change without notice.



✉ sales@samimgroup.com
 🌐 www.samimgroup.com